



Gill Tailor

◆ THE ART OF BESPOKE ◆

Contents

Basic Guideline before Measuring.....	1
Measure Regulation of Vest.....	2
Chest.....	2
Stomach.....	3
Back Length.....	4
Front Length.....	5
First Button Stance.....	6

Basic Guideline before Measuring

To ensure the measurements are precise, please pay attention to the following tips:

1. Put the garment on the table or floor and make sure it is flat and smooth without any wrinkle before measuring.
2. Please follow our regulation strictly for each item to guarantee the finished garment made by us is exactly the same as your original one.

If you have any question or meet any special situation when you are taking the measurement, please free feel to contact our customer representative directly.



Measure Regulation of Vest



1. Chest: Keep the vest flat without any wrinkle, fasten the buttons, measure horizontally at bottom of armhole, twice of this measurement is finished chest.

Measure Regulation of Vest



2. Stomach: Measure at the narrowest part of the vest waist (usually at the same level with lower pocket) , twice of this measurement is finished stomach.

Measure Regulation of Vest



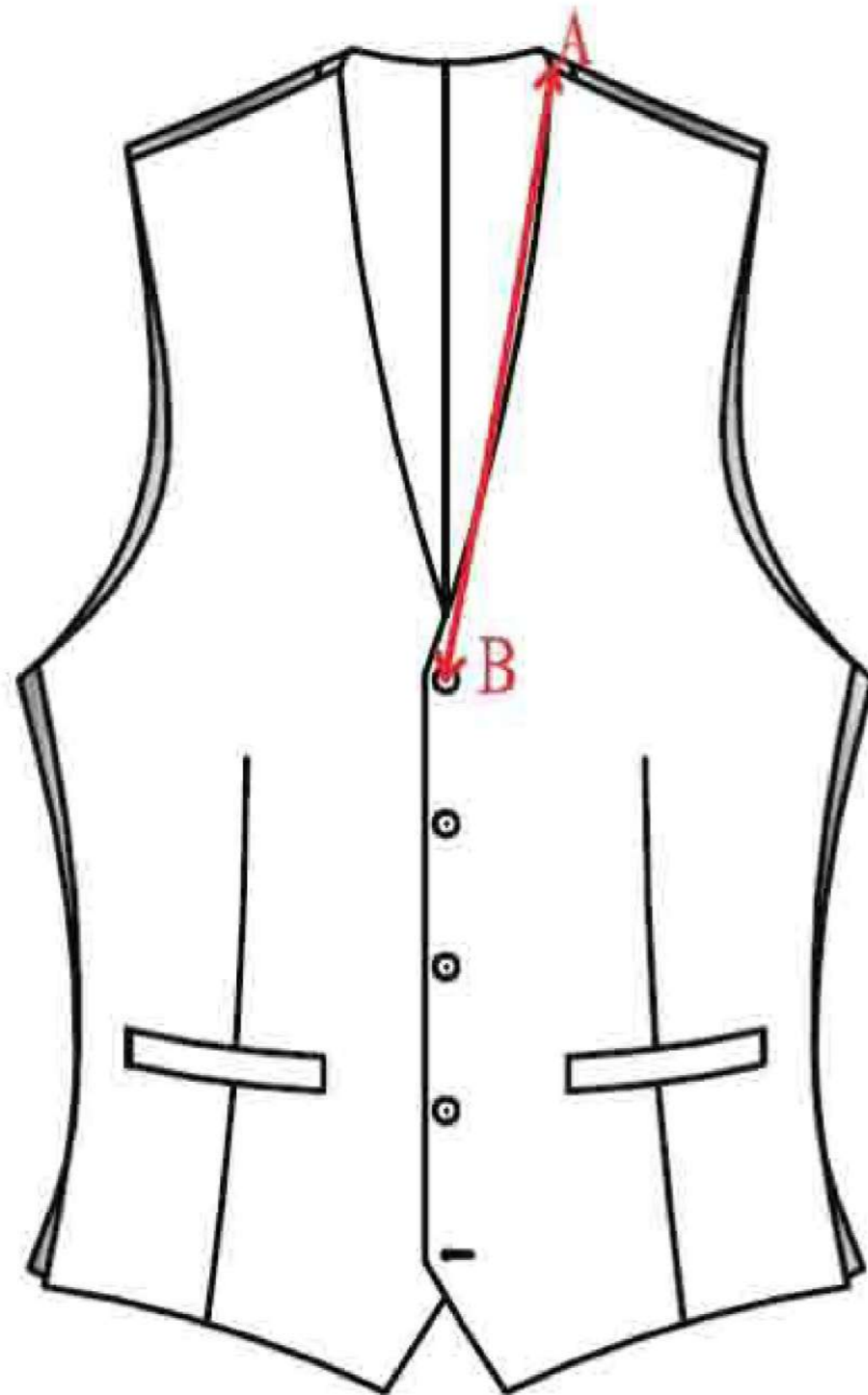
3. Back length: Keep the back panel flat, measure from top of back central seam vertically down to the bottom edge.

Measure Regulation of Vest



1. Vest Front Length: Measure from neck shoulder point vertically down to the bottom edge. (Measure from neck shoulder point vertically down to the pointed bottom angle for pointed bottom vest)

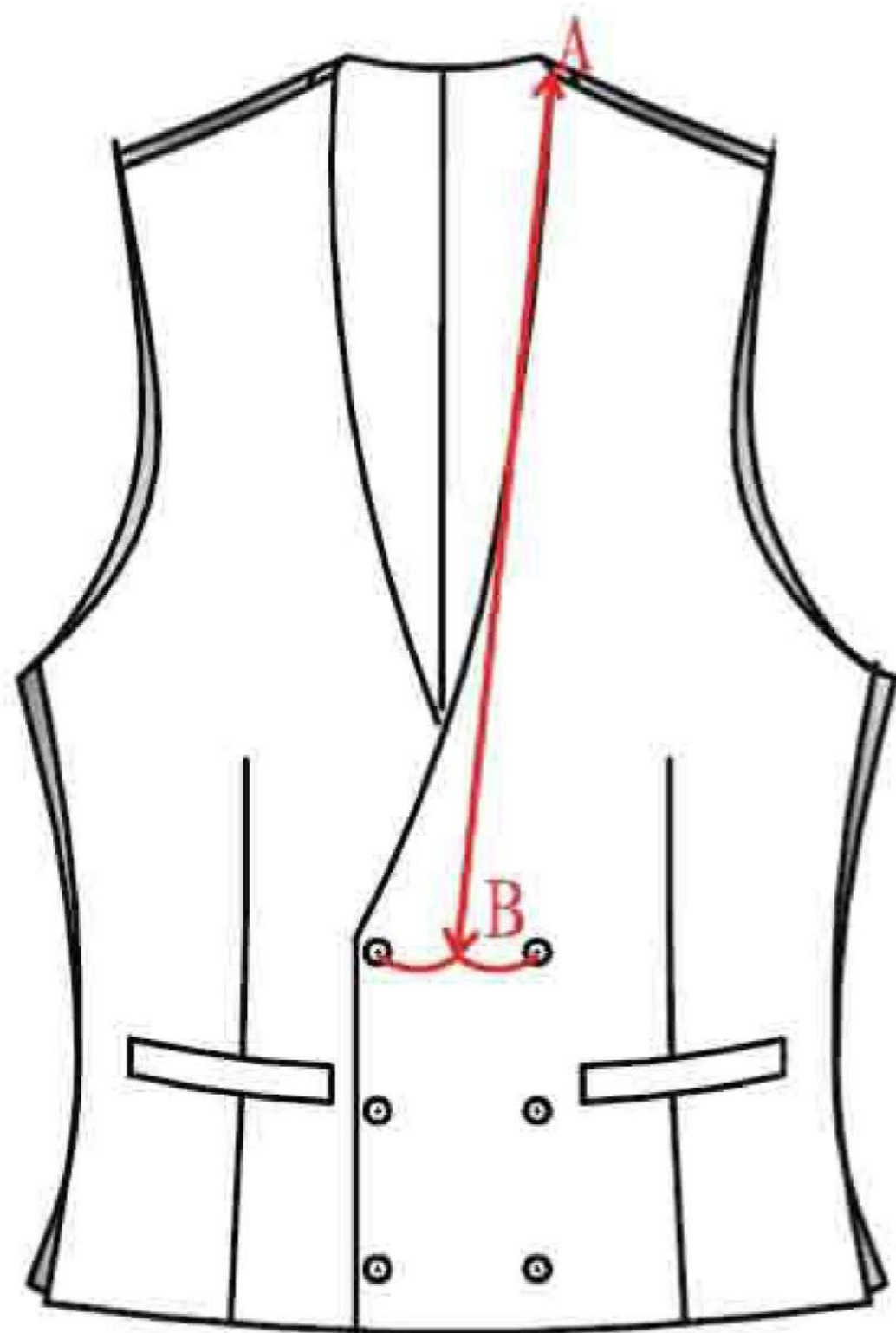
Measure Regulation of Vest



First Button Stance

1) Single Breasted Style: Measure from neck shoulder point to the center of first button.

Measure Regulation of Vest



2) Double Breasted Style

Measure from neck shoulder point to the middle of first functional button and its horizontal decorative button.